

Beasts Within

Evolutionary exoskeletons

It is not just the world around
us that we desire to change.
Since the beginning of
history, we also have wanted
to become more than human,
to become *Homo superior*.

-Allhoff, Lin, James Moor, Weckert

TECHNOLOGY

VS

BIOLOGY

- ❑ The arc of technological development operates on a much accelerated scale (Moore's Law)
- ❑ Technology allows us to become ever more lethally capable on a mass scale
 - ❑ yet 'Medieval' techniques are still effective against remote, over-mechanized arsenals (lack of extinction)

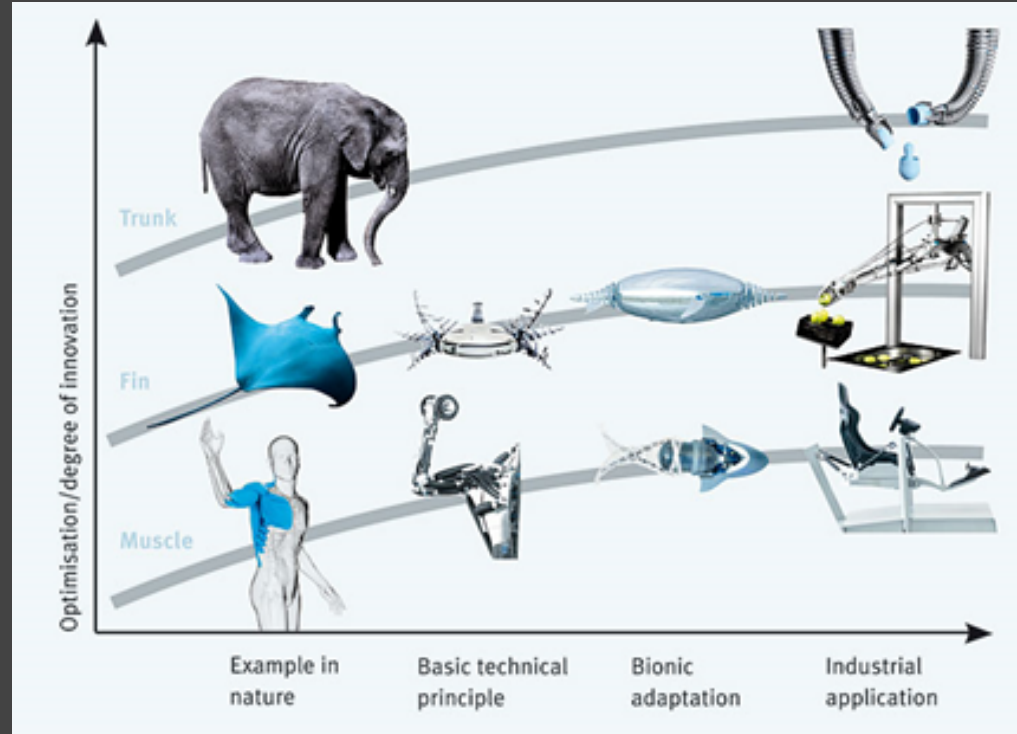
- ❑ Nature used to be the enemy:
 - ❑ "The elements" and the wild were the first battles that humans fought
- ❑ Humanity has developed past the bounds of nature and created ethics



Hi-Tech (\$\$) and lo-evolved combined

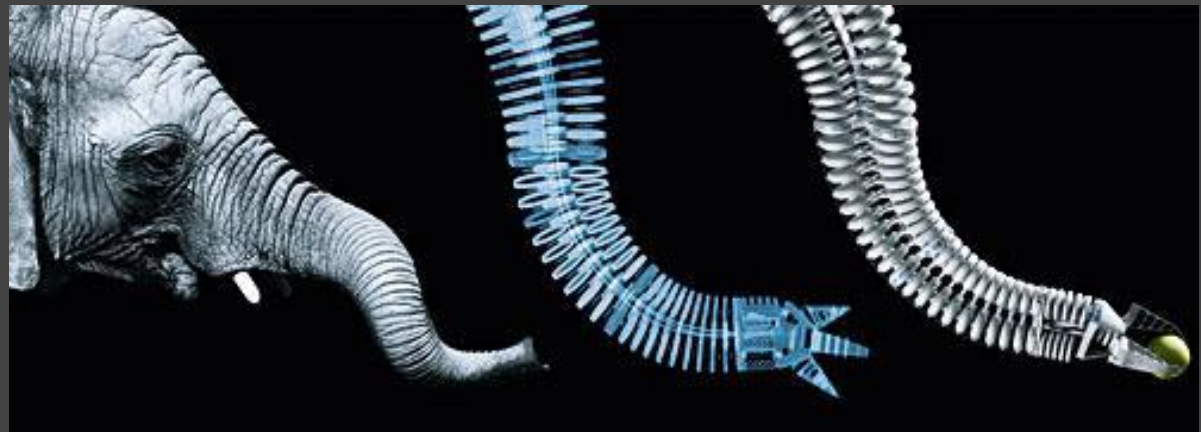
Technology Mimics Nature

As human-engineered technology improves it finally has the capacity to incorporate the principles found in nature





- ❑ **FESTO:**
Industrial
automation,
training and
development



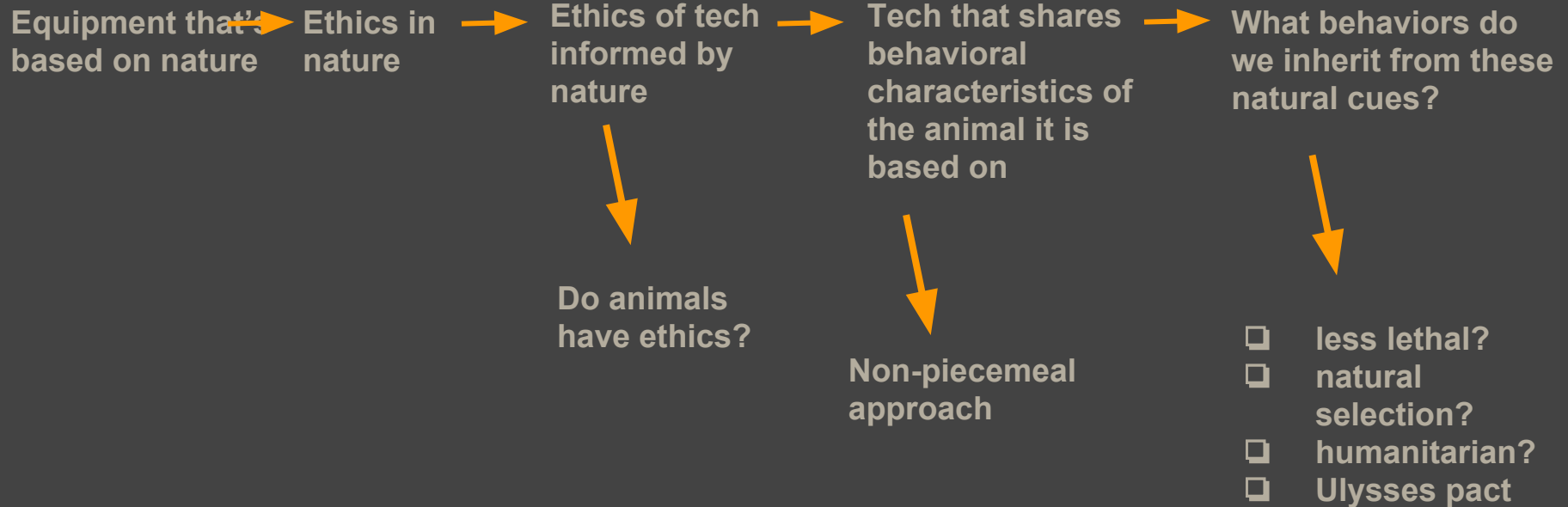
Technology Mimics Nature



Weaponry Mimics Nature



Weaponry Mimics Nature



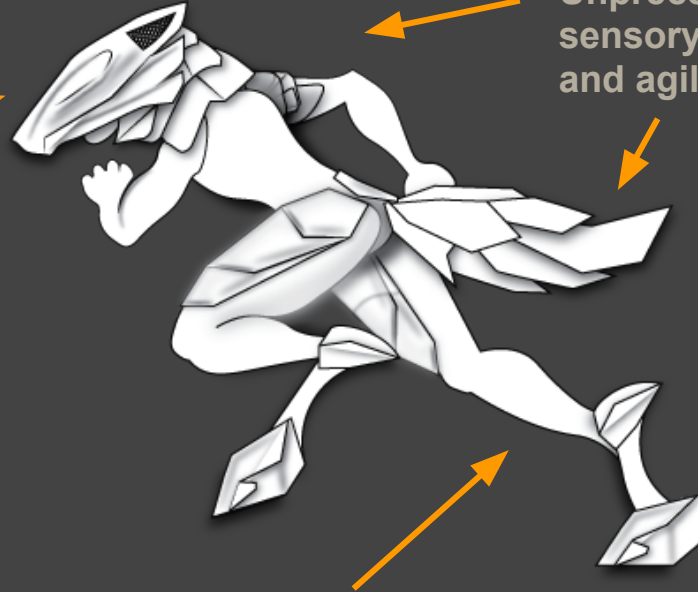
WHEN DO WE STOP BEING HUMAN?

P.A.C.

Performance Appropriation Capable

Reconnaissance Expert

Complete organization
and support under
stable hierarchy



Unprecedented
sensory capacity
and agility

Able to patrol areas up to
50 km in small packs

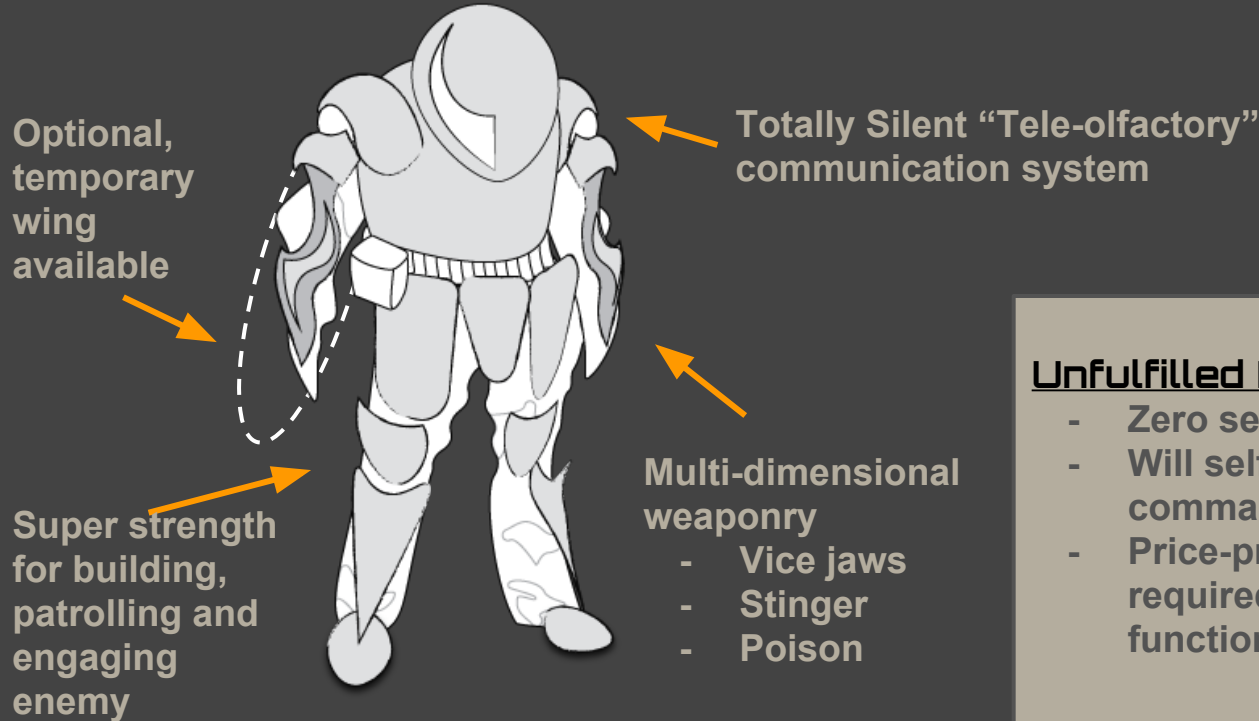
Unfulfilled Human-centric Assets

- Limited capacity to maintain restricted resources
- Immediate engagement of ALL bodies outside of pack hierarchy including other P.A.C.s
- Specific to environment, not transferrable

A.N.T.S.

Anti-establishment Negotiation Tactical Suit

Super Soldier



Unfulfilled Human-centric Assets

- Zero self-preservation instinct
- Will self-destruct upon loss of commanding officer
- Price-prohibitive for numbers required for full operational functionality (at least 10,000)

A.P.E.

Antagonistic Preparedness Equipment

Special Ops (Skirmish)

Incorporation and
collaboration with
conquered forces

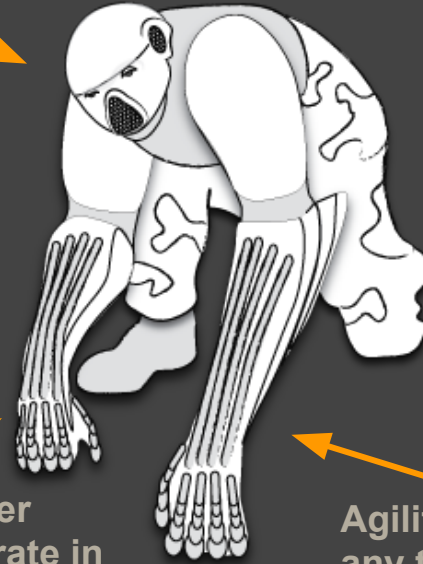
Expressive
communication
(language)

Higher cognitive
ability for planning
and execution of
raids

Camouflage
included

Low soldier
mortality rate in
raids

Agility and strength on
any terrain



Unfulfilled Human-centric Assets

- Engagement always carried out in secret
- High infanticide rate in skirmishes

W.I.L.D.

**Weaponry for
Independent
Logistical
Deployment**

***AVAILABLE SOON**

- Air force option:
"AVIAN FLEW"
- Marine Version
- Exo-exoskeletons
for Invertebrates
and insects



THANKS

“Studies in Ethics, Law, and Technology”-Allhoff, Lin, James Moor, Weckert

“Future Soldier 2030 Initiative”

“[New Yorker Magazine](#)” - Article on Trailhead Ant Behavior

[Wikipedia](#)-Grey Wolf Behavior social and territorial behavior

“[New York Times](#)” - chimp war-like tendencies

[Land Mine Detecting Bees](#)

“Planet Ant” - BBC documentary

Starcraft - for inspiration for A.N.T.S.

PARO- Therapy Seal

Boston Dynamics

FESTO